

r. **N**oise[®]T
Mineral wool acoustic
silencers insulation



Energy to live

ROHHE[®]

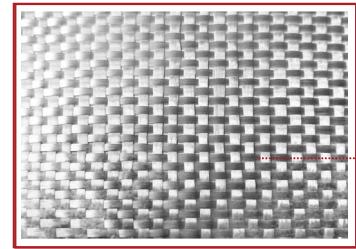
Product

r.Noise[®]T

is preformed mineral wool covered with a special woven glass fibre facing. The mineral wool used has excellent soundproofing properties. The layout of the mineral wool fibres and the innovative method of bonding the fabric provide the r.Noise[®]T product with high rigidity and a guarantee of constant mechanical and damping properties. The fabric used effectively prevents fibre entrainment at air flows of up to 35 m/s. It also has a special anti-fungal coating, thanks to which the product meets the strictest hygienic requirements.



Facing structure



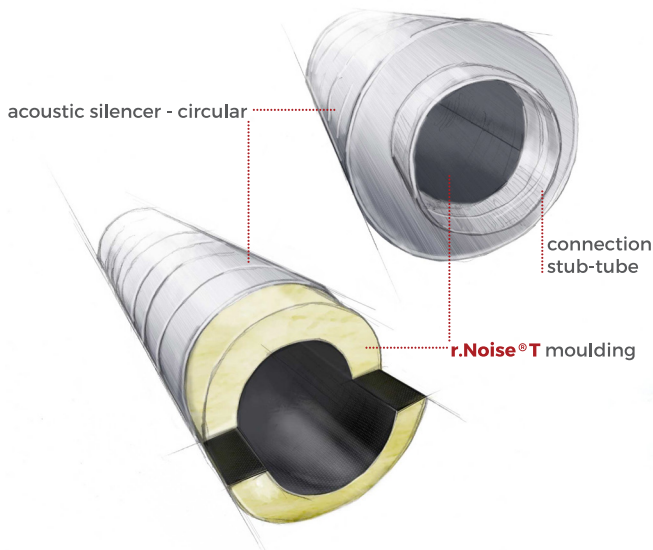
woven glass fibre

Application

r.Noise[®]T

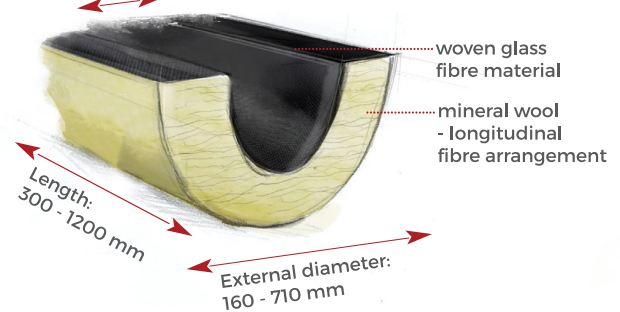
is designed for noise reduction in circular ventilation systems. The product is used as an internal damping element for circular acoustic silencers. r.Noise[®]T perfectly absorbs sounds generated by typical components and equipment used in ventilation systems. It also effectively reduces the noise generated by air flowing through the system.

Acoustic silencer - circular



Product structure

Inner diameter:
80 - 630 mm



Dimensions

r.Noise[®]T

is available in sizes corresponding to typical components of circular ventilation systems.

Internal diameters [mm]: 80, 100, 125, 150, 160, 200, 250, 300, 315, 355, 400, 450, 500, 560, 630

External diameters [mm]: 180, 200, 250, 315, 355, 400, 450, 500, 560, 630, 710

Lengths [mm]: 300, 500, 600, 900, 1000, 1200

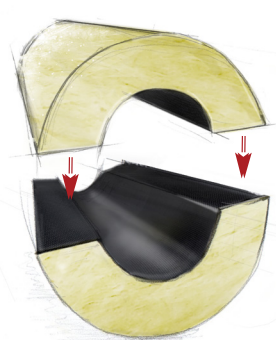
The r.Noise[®]T mouldings can also be ordered in other non-standard sizes.

Assembly

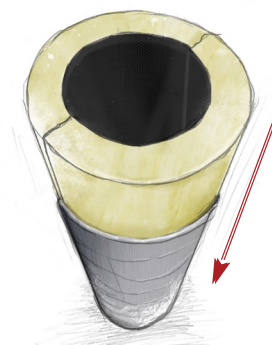
r.Noise[®]T

consists of two identical halves which, when assembled, form a set ready to be installed inside the acoustic silencer.

Assembly



assembling the two halves



insertion of the two assembled halves inside the silencer

Technical information

PARAMETER	VALUE	UNIT	SYMBOL	NORM
sound absorption coefficient	$\alpha_w = 0,95 \pm 0,05$	(class A)	AW0,95	EN ISO 11654
declared thermal conductivity coefficient (temp. 50 °C)	0,044	W/m·K	λ_D	EN 12667
reaction to fire class	Incombustible	-	A2	EN 13501-1
water absorption (short-term)	≤ 1	kg/m ²	WS1	EN 13472
maximum application temperature	50	°C	ST(+50)	EN 14707
air permeability	≥ 10	kPa·s/m ²	AF,10	EN ISO 9053-1
thickness tolerance	-1% lub -1mm / +3mm	% lub mm	T5	EN 13467
width tolerance	$\pm 1,5\%$	%	-	EN 13467
length tolerance	$\pm 2\%$	%	-	EN 13467
CE Product Code	MW-EN14303-T5-ST(+50)-WS1-AW0,95 additional property: AF,10			
Product Norm	EN 14303:2016-02			
PZH hygienic certificate	Nr 69/322/69/2020			

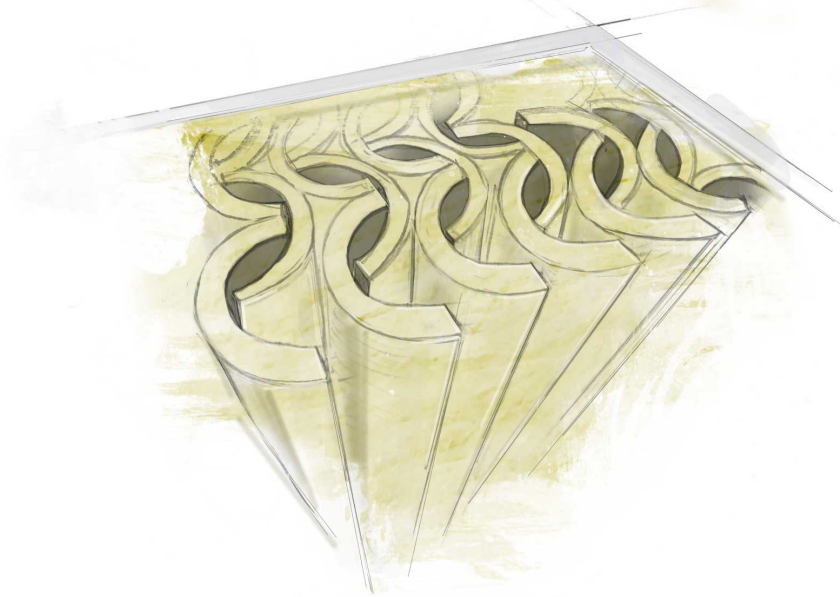
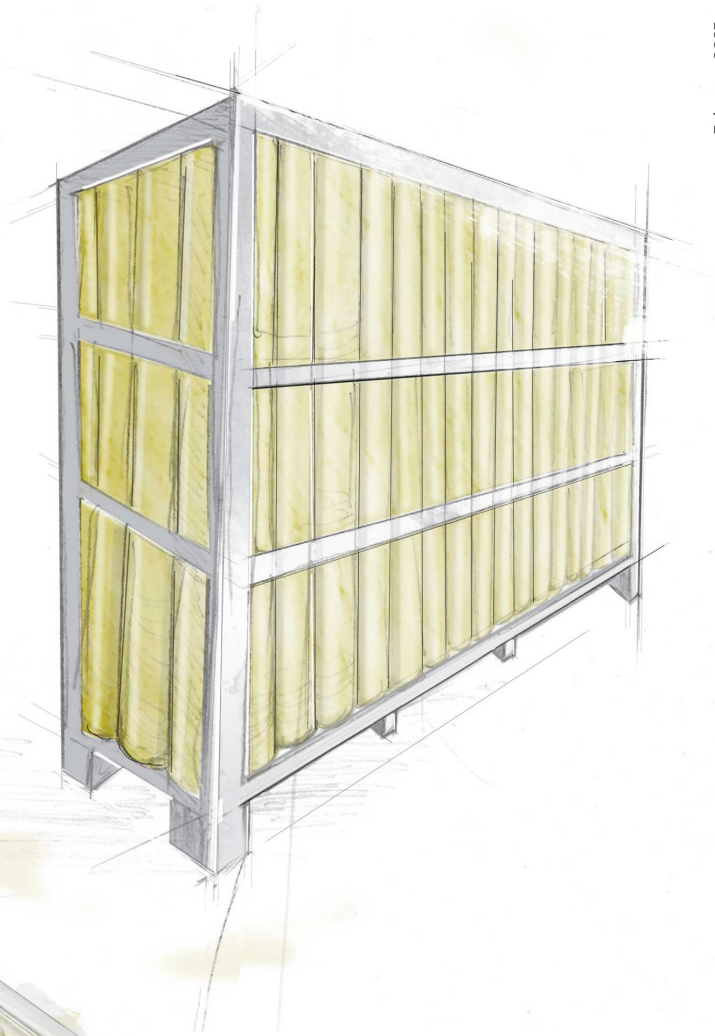


Method of packaging

The **r.Noise®T** preformed elements are stacked vertically on a wooden pallet (1.0 x 2.4 m). In addition, a support frame made of cardboard angles is built onto the pallet. Depending on the length of the product, the items are stacked in two, three or four layers. Subsequent layers are separated by a cardboard divider. Depending on the size of the product, a pallet can hold between 20 and 530 sets. The entire packed pallet is protected from above with an auxiliary LDPE hood and additionally wrapped with stretch foil. This type of packaging effectively protects the product from damage during transport and storage operations.

Positioning on the pallet

The individual **r.Noise®T** elements are stacked vertically in alternate directions. This arrangement ensures efficient use of space on the pallet and protects the product from mechanical damage.



ROHHE partner:

ROHHE Sp. z o.o.

Poland, 05-555 Tarczyn, Al. Krakowska 19A

rohhe.pl

tel. +48 22 299 88 33, biuro@rohhe.pl, fax +48 22 299 88 34

Orders: 736 233 377, zamowienia@rohhe.pl

Logistics: 736 233 372, logistyka@rohhe.pl

Sales - Polska: 736 233 371, 736 233 378, 736 233 374, sprzedaz@rohhe.pl

Sales - Export: 736 233 379, export@rohhe.pl



ROHHE®